

E² Inc. SFTP Server Access

If you are familiar with using FTP clients, feel free to use the information at the bottom to connect using whatever SFTP client you like. Otherwise, there are instructions below for installing and connecting with FileZilla in both Windows and Mac OS X.

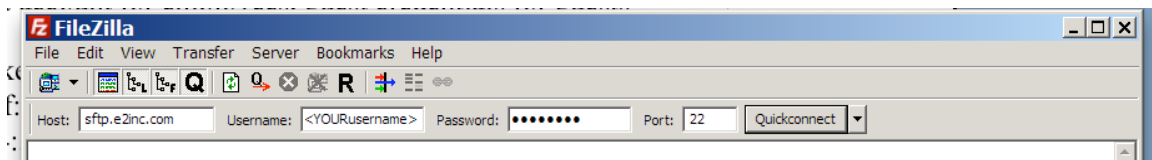
Installation

-- If you already have FileZilla installed, please skip to the next step (Connecting).

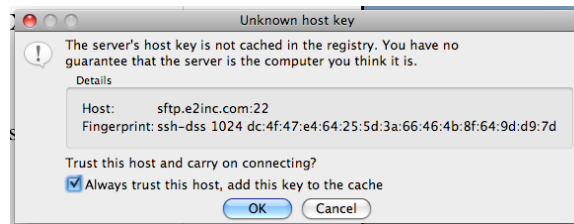
-- If you do not already have FileZilla installed, download the latest version here: <http://filezilla-project.org/download.php> and install it.

Connecting

--Start FileZilla. Fill in the quick connect bar as shown in the picture below. Enter sftp.e2inc.com for the host, 22 for the port, and use your username and password. Then, click the quickconnect button on the right.



--The first time you connect, you will be asked to confirm the server's host key. Verify that it is correct (ending with 9d:d9:7d or 4f:38:35), click "Always trust..." then click ok.



--Once connected, two file browsers should show up -- one side is the Extranet, the other side is your local computer. To upload/download files, simply drag-and-drop between the two file browsers.

General Connection Information

Connection Type: SFTP

Server hostname: sftp.e2inc.com

Port number: 22 (the default port for SFTP)

Username/password: Extranet account for employees, guest credentials for guests

For verifying the server host key (guarantees you are actually connecting to E2 Inc):

Server MD5 fingerprint: dc:4f:47:e4:64:25:5d:3a:66:46:4b:8f:64:9d:d9:7d

Server SHA-1 fingerprint: 44:58:a5:15:8a:03:db:8f:0d:a7:05:93:00:19:52:87:a7:4f:28:35